

THANK YOU For Your Support!

The St. Vincent de Paul society of Milwaukee; is an organization dedicated to the elimination of poverty and hunger in our community.

A gift to St. Vincent de Paul Society of Milwaukee makes a difference in the lives of those in need.

For more information on the
St. Vincent de Paul Society
including donations and the thrift stores go to
www.svdpmilw.org

St. Vincent de Paul Society Car Donation Program

www.svdpusa.com/donate-my-car

1-800-322-8284

Please indicate that
you would like the proceeds to benefit
SVDP in Milwaukee



Revised 1/12/21

Stores & Donation Locations



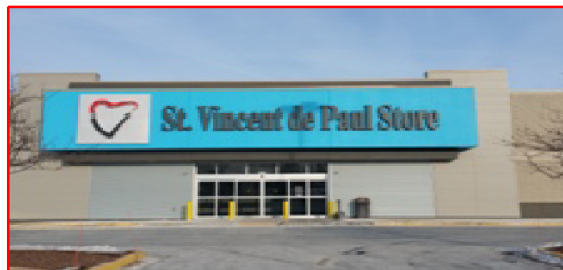
2320 W Lincoln Ave, Milwaukee
414-672-2040

Store Hours

Monday - Saturday 10am - 6pm

Donation Hours

Monday - Saturday 10am - 5pm



4476 S 108 St, Greenfield
414-377-9077

Store Hours

Monday - Saturday 10am - 7pm

Sunday 11am - 6pm

Donation Hours

Monday - Saturday 10am - 6pm

Closed Sundays

For a pick-up of furniture items or
donation assistance please call

414-462-7863

Monday - Friday 8am - 4pm

svdpstore@svdpmilw.org



St. Vincent de Paul Society
At the Heart of Giving.

Guided Donation See

We are happy to accept your donation of gently used merchandise that is in good useable condition.

You will receive a tax deductible receipt for your donation.

Appliances (under 5 years old)

dorm refrigerators, small chest freezers, and small household appliances

Books/Movies

Hardcover & paperback books, CD's, records, magazines, DVD's, & VHS tapes

Clothing

All types of mens, women's, & children's clothing, belts, ties, hats, gloves, jewelry, costumes, costume jewelry, watches, purses, scarves, & shoes

Collectibles

Antiques, gift ware, & knick knacks

Electronics

Computers, flat screen computer monitors & flat screen TV's (under 5 years old), microwaves, portable stereos, radios, vacuums, DVD players, VCR's, lamps, clocks, & speakers

Medical Equipment

Adult diapers, crutches, canes, shower chairs, toilet seat risers, walkers, & wheelchairs

Furniture

Area rugs, bed frames, bookcases, chairs, changing tables, chest of drawers, china cabinets, cocktail tables, couches, cribs (under 5 years old), conference tables, credenzas, dining room table & chairs, desks, dressers, end tables, file cabinets, headboards, mirrors, night stands, office chairs, patio furniture, small TV stands, wall hangings, pictures, artwork, sculptures, & paintings

Miscellaneous

Artificial plants, bedding, bicycles, seasonal decorations, cookie tins, cooking utensils, cups, saucers, curtains, drapes, curtain rods, dishes, eating utensils, glassware, hangers, hunting & fishing items, ironing boards, linens, magazine racks, plant stands, pots & pans, pottery, serving dishes, sewing machines, silverware, sporting goods, suitcases, towels, trophies, vases, & yard tools/equipment

Toys

Games, puzzles, trading cards, stuffed animals, & assorted boys, girls, & baby toys

*****We are unable to pick up from attics or higher than the 2nd floor unless there is an elevator*****

Unfortunately we are unable to accept:

- * Air Conditioners
- * Large Appliances (ovens, washers, dryers full size refrigerators, & dishwashers)
- * Building Supplies
- * Bunk Beds
- * Computers older than 5 years
- * Console Stereos
- * Copy Machines
- * Drop Sided Cribs
- * Encyclopedias/Textbooks
- * Entertainment Centers
- * Futons
- * Hide a Beds/Sofa Sleepers
- * Hospital Beds
- * Mattresses/Box Springs
- * Organs/Pianos
- * Paint/Hazardous Chemicals
- * Ping Pong/Pool Tables (full size)
- * Sinks/Bathtubs/Counters
- * Swing Sets
- * Tires
- * Tube TV's/Projection TV's/Console TV's
- * Waterbeds

Thank you for caring about those in need, your generous donation allows us to continue to help so many people. Unfortunately, due to recycling laws, and limited storage space SVDP is no longer able to accept all donations.